

KPAC II

KPAC-II SERIES PORTABLE AIR CONDITIONERS



OPERATION MANUAL



TABLE OF CONTENTS

SECTION I - UNIT COMPONENTS	3
A. KPAC-II PORTABLE AIR CONDITIONERS, MODELS 1411, 1811, 2421	3
SECTION II - INSTALLATION AND ASSEMBLY	5
A. AIR CHUTES (STANDARD EQUIPMENT)	5
B. CONDENSATE TANK	5
C. FOR CEILING KIT USERS - SINGLE DUCT CEILING KIT	5
D. POWER CONNECTION	6
SECTION III - OPERATIONAL SAFEGUARDS.....	6
SECTION IV - UNIT OPERATION	9
A. APPLY ELECTRICAL POWER.....	9
B. CONTROL PANEL	9
C. SYSTEM OPERATION.....	10
D. CONDENSATE TANK OPERATIONS.....	11
SECTION V - BUILT IN SAFEGUARDS	11
A. COMPRESSOR TIME DELAY	11
B. HIGH PRESSURE RESET SWITCH AND ALARM	12
C. AUTOMATIC RESTART	12
D. CONDENSATE TANK AND HIGH LEVEL ALARM	12
E. SERVICE PORTS.....	12
SECTION VI - APPLICATION REQUIREMENTS.....	12
A. AIR TEMPERATURE REQUIREMENTS.....	12
B. CAPACITY AND TEMPERATURE SETTINGS	13
C. POSITIONING OF UNITS.....	13
SECTION VII - MAINTENANCE.....	14
SECTION VIII - FAULT CODES	14
SECTION IX - KPAC II TROUBLESHOOTING GUIDE.....	15

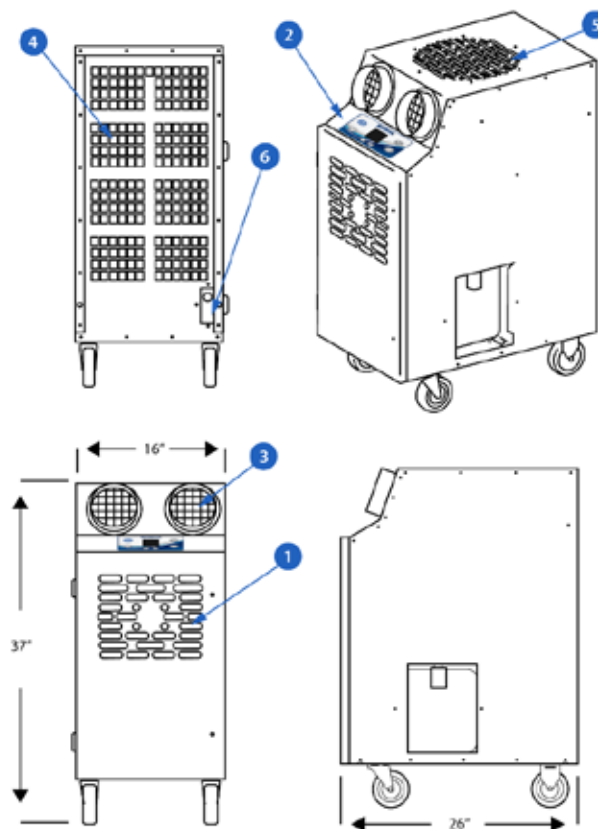
SECTION I - UNIT COMPONENTS

Before installing and using the KwiKool KPAC II Series Portable Air Conditioner, read this manual carefully for instructions and proper usage and all safeguards. This manual should be retained for future reference.

KwiKool KPAC II Portable Air Conditioners are designed to remove heated air from a specific area. The systems use flexible air chutes (standard feature) to supply cool air and an optional ceiling kit can be used to send the hot air up through the ceiling or to another space. The three models have capacities of 1.1 ton, 1.5 ton and 2 tons.

A. KPAC-II PORTABLE AIR CONDITIONERS, MODELS 1411, 1811, 2421

KPAC II

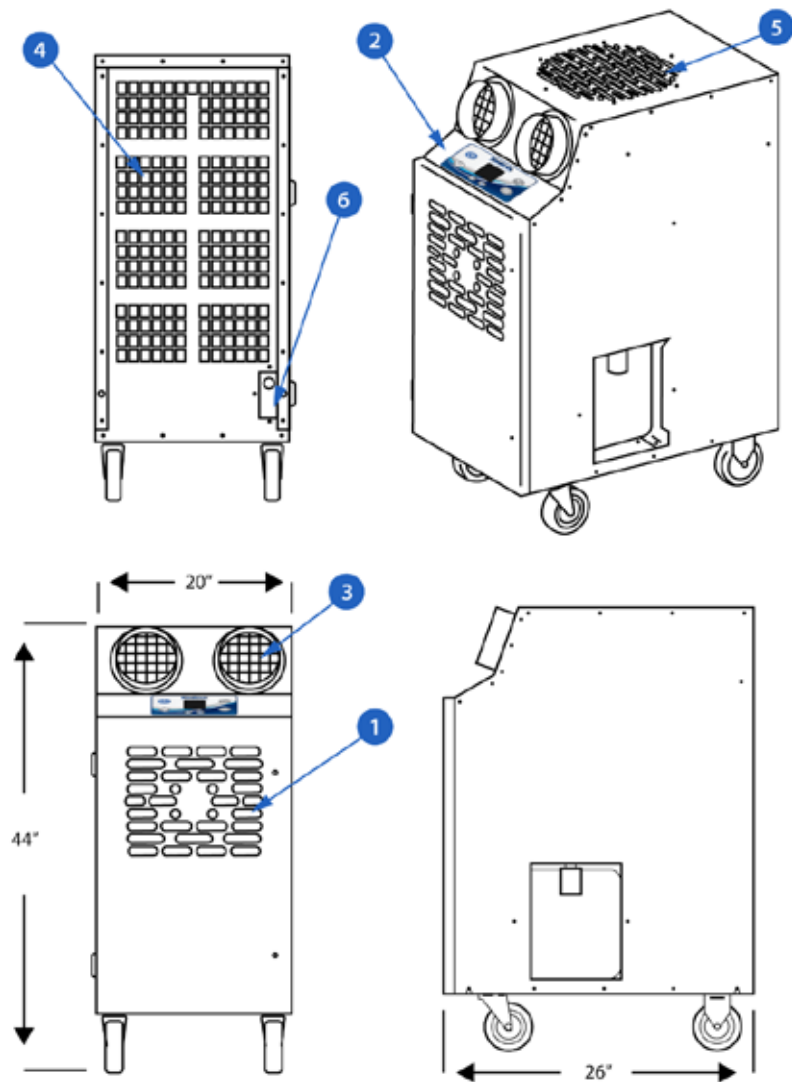


KPACII 1411-2 / 1811-2

LEGEND	
1. Cold Air Return	5. Condenser Air Outlet
2. Control Pad	6. Power Cord
3. Cold Air Supply	7. Condensate Tank
4. Condenser Air Inlet	8. Air Chutes



KPAC II



KPACII 2421-2

LEGEND

- | | |
|------------------------|-------------------------|
| 1. Cold Air Return | 5. Condenser Air Outlet |
| 2. Control Pad | 6. Power Cord |
| 3. Cold Air Supply | 7. Condensate Tank |
| 4. Condenser Air Inlet | 8. Air Chutes |



KWIKOOL.COM

SECTION II - INSTALLATION AND ASSEMBLY

A. AIR CHUTES (STANDARD EQUIPMENT)

Install Supply Air flanges with the supplied fasteners to the front of the KPAC-II unit above the control panel. Use the supplied clamps to attach the air chutes to the collars. See instructions in the air chute kit for specific procedures.

B. CONDENSATE TANK

KPAC-II systems come equipped with an internal 2.5-gallon condensate tank. The internal condensate tank is equipped with a float switch that shuts down the KPAC-II unit and alerts operators with an alarm and displays **CF** ("Condensate Full") when the condensate tank is full. This prevents accidental water overflow on the floor.

The alarm will clear automatically upon emptying then reconnecting the 2.5-gallon tank. To continue operation of the KPAC-II, the collection bottle must be removed, emptied and then re-installed.

Turning the KPAC-II to **OFF** will stop the audible alarm.

C. FOR CEILING KIT USERS - SINGLE DUCT CEILING KIT

KPAC-II models can use this method when conditioning a space, adding supplemental conditioning, process conditioning and comfort conditioning. Additionally, the ceiling kit replacement panel is not limited to ceiling use and may be placed or fastened to any vertical or horizontal surface, providing the Discharge air is able to be directed to the space where it is mounted. For areas with a closed ceiling or no ceiling use the double flange ceiling kit method or extended duct method.

NOTE

To fasten the duct to the exhaust port collar, using the "chinch" strap, thread the strap through the bottom side of the buckle and squeeze the tab to open the clamp of the buckle. The strap is then pulled as tightly as possible through the buckle and the clamp is released to hold the strap in place.

CAUTION

The area where the Discharge air is directed must be open to a space that is well vented or large enough to absorb the load without pressurizing and coming back into the conditioned space. Discharge Make-up air will come from the conditioned space and create a negative pressure in the conditioned area.

PRUDENCE

La zone où l'air de décharge est dirigé doit être ouverte sur un espace bien ventilé ou suffisamment grand pour absorber la charge sans mettre sous

pression et revenir dans l'espace conditionné. L'air d'appoint de décharge proviendra de l'espace conditionné et créera une pression négative dans la zone conditionnée.

1. The KPAC-II is placed in the area being conditioned.
 2. Line up the flange included with the ceiling kit with the corresponding holes in the top of the system and use the included fasteners to mount the flange. Discharge Air is moved from the space through ducts connected to the condenser Discharge Air flange on the KPAC-II.
 3. Clamp the duct to the ceiling panel (the ceiling panel is typically used in drop ceilings).
 4. A 24"X24" space is opened in the ceiling grid and the replacement panel with the duct attached to the ceiling kit flange is installed. Then clamp the duct onto the top of the KPAC.
 5. Determine if the application can tolerate this condition. The KPAC-II must have fresh Make-up air to the condenser to operate.
 6. The negative pressure will pull in surrounding conditioned air and ambient air from unsealed areas which may include moisture, dust, or other particles.
- Visit www.KwiKool.com for more information and a complete set up guide.

D. POWER CONNECTION

Verify that the source power, phase, and breaker size is compatible with the KPAC-II serial plate information and that the electrical circuit is dedicated to the use of the KPAC-II Unit. Contact a licensed electrician in case of doubt about the connection.

KPAC-II systems are factory equipped with 8 feet of power cable sized to meet the power requirement of the system. An extension power cable is allowed but cannot exceed 25 feet and must be rated to operate the KPAC-II. KPAC-II units that come supplied with a factory installed plug require the exact receptacle to match the plug and exact circuit size and power.

Cutting the power plug on the KPAC-II unit will void its warranty.

SECTION III - OPERATIONAL SAFEGUARDS

Read the following safeguards carefully before installing the KPAC-II:

WARNING

Do not operate or install the KPAC-II unit in a potentially explosive, combustible, or corrosive gas atmosphere.

AVERTISSEMENT

N'utilisez pas et n'installez pas l'unité KPAC-II dans une atmosphère de gaz potentiellement explosive, combustible ou corrosive.

WARNING

To avoid burns and fire damage, keep the KPAC-II system away from flammable materials and open flame.

AVERTISSEMENT

Pour éviter les brûlures et les dommages causés par le feu, gardez le système KPAC-II à l'écart des matériaux inflammables et des flammes nues.

WARNING

To avoid electrical shock, keep the KPAC-II system away from direct contact with water and any liquids. Do not touch the system with wet hands.

AVERTISSEMENT

Pour éviter les chocs électriques, gardez le système KPAC-II à l'écart de tout contact direct avec l'eau et tout liquide. Ne touchez pas le système avec les mains mouillées.

WARNING

Do not move the system while it is operating. Before moving the system, first turn system to OFF then unplug the system from the power source. Remove all ducting and hoses attached to the KPAC unit. Only then should the casters be unlocked.

AVERTISSEMENT

Ne déplacez pas le système pendant son fonctionnement. Avant de déplacer le système, éteignez-le d'abord, puis débranchez-le de la source d'alimentation. Retirez tous les conduits et tuyaux fixés à l'unité KPAC. Ce n'est qu'alors que les roulettes doivent être déverrouillées.

CAUTION

To ensure the KPAC-II system is stable, the floor on which the system is to be placed should be level, free of vibration and strong enough to support the weight of the KPAC-II model. Lock casters to prevent unit movement.

PRUDENCE

Pour garantir la stabilité du système KPAC-II, le sol sur lequel le système doit être placé doit être de niveau, exempt de vibrations et suffisamment solide pour supporter le poids du modèle KPAC-II. Verrouillez les roulettes pour empêcher l'unité de bouger.

CAUTION

Do not tilt or overturn the unit, since this could damage the compressor.

PRUDENCE

Ne pas incliner ou renverser l'appareil, car cela pourrait endommager le compresseur.

CAUTION

Do not place objects on top of the KPAC II Series System, since these objects could fall off and hurt personnel or damage the equipment.

PRUDENCE

Ne placez pas d'objets sur le système de la série KPAC II, car ces objets pourraient tomber et blesser le personnel ou endommager l'équipement.

CAUTION

Do not insert your hand or any object into the cold air supply chutes. This blocks the supply chutes and may affect operation of the KPAC II Series System.

PRUDENCE

N'insérez pas votre main ni aucun objet dans les goulottes d'alimentation en air froid. Cela bloque les goulottes d'alimentation et peut affecter le fonctionnement du système de la série KPAC II.

CAUTION

Do not operate the KPAC II Series System with its service doors open, since this could affect the circulation of air in the system.

PRUDENCE

N'utilisez pas le système de la série KPAC II avec ses portes de service ouvertes, car cela pourrait affecter la circulation de l'air dans le système.

If the KPAC-II system makes abnormal noises or vibrations, call 1-800-KWIKOOL (1-800-594-5665) for help.

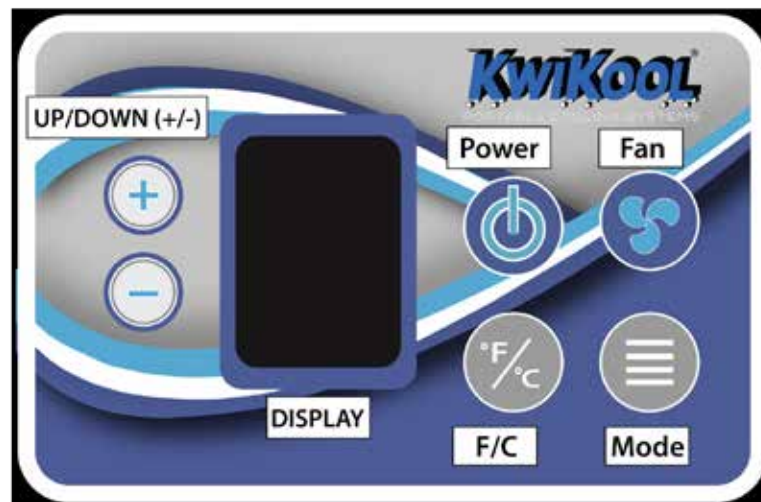
SECTION IV - UNIT OPERATION

A. APPLY ELECTRICAL POWER

Once power is engaged by plugging in the system and/or switching the breaker to the **ON** position, the KPAC-II display will show the current room temperature. The unit is set to **OFF** and the fan is set to the default position. A 2.5-minute time delay starts, indicated by a flashing F on the display. If nothing shows on the display, refer to **Section IX, Troubleshooting Guide**.

B. CONTROL PANEL

The control panel display shows the current operational status of the unit.



1. **POWER** Button - Pressing this button on the control panel engages or shuts down the KPAC-II system. All settings selected are stored in the microprocessor board even if the power is lost including the **ON/OFF** selection. Refer to **Section IX, Troubleshooting Guide**, if the KPAC-II is alerting an alarm after selecting **ON**.
2. **MODE** Button - Depressing the **MODE** button selects the choice of operations: **COOL**, for cooling with compressor operation. **FAN**, for air circulation without compressor operation. **COOL** will flash when the compressor is running. **COOL** will

- not flash when the room temperature is equal to or lower than the set temperature or the system is timing out.
3. **F/C** - Selects the way that room temperature and set point are displayed on the control panel. Choices are Fahrenheit or Celsius. **F** is the factory default. This indicator will flash when the system is in “time out”. The flashing indicates the system is in a 2.5-minute time delay to prevent compressor short cycling.
 4. **FAN** - Pressing the fan key cycles the Supply air fan between **AUTO FAN** and **FAN ON**. When the system is in **AUTO FAN** the display reads **AUTO FAN**. The Supply Air fan only operates when the compressor is running. When the fan is set to **ON**, the fan runs continuously as long as the unit is in the **ON** position. The fan speed window will be blank when in **FAN-ON mode**.
 5. **Up (+)** and **Down (-)** Selector Buttons - Raises or lowers the desired set temperature.
 - a) When changing the set point, pressing the + or – key, the word **SET** will appear on the display and the current set point flashes **ON** and **OFF**. The value of the set point is changed 1 degree each time the + or – is pressed.
 - b) The adjusted set point flashes on and off 12 times after the last change and then returns to display the room temperature.
 - c) Lowering or raising the set point will not change the temperature of the Supply air. For best results, always adjust the set point to a temperature the KPAC-II can cycle on and off at to avoid operational issues such as freezing.

CAUTION

KPAC-II systems are designed to maintain the set point when sized properly. Constant operation without achieving the set point may shorten the expected operational life of the system.

PRUDENCE

Les systèmes KPAC-II sont conçus pour maintenir le point de consigne lorsqu'ils sont correctement dimensionnés. Un fonctionnement constant sans atteindre le point de consigne peut raccourcir la durée de vie opérationnelle prévue du système.

NOTE

The lowest set point temperature available for the KPAC-II is 60 F, and the highest setting is 95 F. The control will not allow adjustments beyond these ranges.

C. SYSTEM OPERATION

1. Pressing the **ON/OFF** button once on the control panel will turn the KPAC-II System on and **ON** will be displayed on the right side of the display as well as the previously chosen mode.
2. If the unit was previously set to the Cooling Mode, then **COOL** will be displayed. If the compressor is running, the **COOL** on the display will be flashing. If the unit has been sitting for over 2 minutes, this should happen immediately upon turning the unit on, unless the set point is lower than the current room temperature. In this case the unit is ready to automatically turn on once the temperature rises above the set point.

3. If the unit was recently turned off or the unit turned itself off because it reached the set point, the compressor will not turn on until the system waits for approximately 2.5 minutes. This prevents the compressor from being damaged due to short cycling of the compressor.
 - The indicator that the unit is in the “time out” condition is that the **F** (or **C**) in the display will be flashing.
 - When the compressor starts, the **F** will stop flashing and the **COOL** will begin flashing.
 - The condenser fan will start immediately with the compressor. If the display flashes **99**, this indicates ambient temperature of 99 F or more. This is normal and will stop flashing when the ambient temperature falls below 99 F.
4. If the unit was previously set to the **FAN** mode, then **FAN** will be displayed and the Supply Air fan will start to run.

D. CONDENSATE TANK OPERATIONS

The following steps are those needed to empty the tank and reset the alarm.



1. Remove the float switch jack by pulling it straight back, then remove the condensate bottle by pushing the front of the bottle slightly downward and then pull the bottle out.
2. Remove the cap threaded onto the bottle by turning it counterclockwise.
3. Empty the collected water.
4. Put the cap back on the bottle by turning it clockwise taking care not to cross thread the cap upon installation.
5. Tighten the cap to the point where the angle connector on the condensate bottle lines up with the nipple extending out from the drain pan on the KPAC-II and insert the bottle by pushing down slightly to clear the extended drain pan nipple. Be sure the drain pan nipple is inside of the angle connector and the cap is snug and not cross threaded to avoid water leakage.
6. Install the float switch jack by pushing it straight in and confirm the pin is fully inserted or the alarm will not clear.
7. Continue normal operation.

SECTION V - BUILT IN SAFEGUARDS

A. COMPRESSOR TIME DELAY

Protects the unit from potential damage by delaying the compressor from starting before the pressures in the mechanical system equalize. This always activates when the KPAC-II:

- Cycles off.
- Is turned off.
- Power is lost and then restored.

- The operational mode is changed.
Display flashes **C** or **F** if the time delay is activated. The time delay lasts for about 2.5 minutes.

B. HIGH PRESSURE RESET SWITCH AND ALARM

Protects the KPAC-II Series unit from potential damage to the mechanical system by shutting down, sounding an audible alarm and displaying a fault code (**AL**) when the system pressure exceeds safe operating conditions. The **HP** (high pressure) **Reset** switch is a manual reset switch located in the condenser inlet on the back of the system and labeled **HP Reset**. It must be reset after the switch is tripped and the condition causing the trip is corrected. If tripped, the switch will click when pushed in and then release.

C. AUTOMATIC RESTART

In the event of a power loss, the KPAC-II resumes operation when the power is restored. All operational functions are preserved in the memory of the Microprocessor Board including the ON/OFF selection.

D. CONDENSATE TANK AND HIGH LEVEL ALARM

All KPAC models come standard with an internal condensate tank. The tank is equipped with an overflow safety cut-off. When the tank is full, the safety will automatically shut down the KPAC-II unit, sound an audible alarm and display a fault code (**CF**). This prevents accidental flooding of the conditioned space. To continue operation when the bottle is filled, see **Section II, Installation and Assembly** Paragraph B.

E. SERVICE PORTS

Located in the filter access compartment (as seen when facing the controls of the unit) of the KPAC-II. This gives service personal a connection point for service gauges to monitor the operating pressures of the KPAC-II's refrigeration system.

SECTION VI - APPLICATION REQUIREMENTS

A. AIR TEMPERATURE REQUIREMENTS

The environmental requirements of the KPAC-II unit at the installation site are 60 to 110 F for the condenser Make-up air located on the back of the unit.

- If the unit is operated in an environment above 110 F, the **HP Reset** switch may trip, stopping the unit's compressor. The operator also may notice diminished performance.
- The **HP Reset** switch is a manual reset switch. The switch is located in the condenser Make-up air inlet on the back of the system.
- Reset the unit by pressing the **HP Reset** button.

Standard air-cooled KPAC-II models are not designed to operate at temperatures below 60 F. Low-ambient temperature controls are available. The controls must be special ordered and at an additional cost. Temperatures below 60 F will cause freezing and/or diminished performance and can void the warranty.

B. CAPACITY AND TEMPERATURE SETTINGS

Sizing of the units is based on matching capacity to a specific heat load while maintaining a 72 F temperature. To reach temperatures below 72 F, the unit must have extra capacity.

CAUTION

KwiKool recommends that the operator not set the temperature set point below 72 F, unless there is excess cooling capacity beyond the heat load, since this may cause the unit's evaporator coil to freeze up.

PRUDENCE

KwiKool recommande à l'opérateur de ne pas régler le point de consigne de température en dessous de 72 F, à moins qu'il n'y ait une capacité de refroidissement excessive au-delà de la charge thermique, car cela pourrait provoquer le gel du serpentin de l'évaporateur de l'unité.

C. POSITIONING OF UNITS

Do not place the KPAC-II unit in direct sunlight. The unit should be positioned so that the output of the unit can be focused as close to the heat generating equipment as possible with the front grill fully exposed.

CAUTION

Do not block the front of the unit, since this will cause a restriction in the airflow and can cause low performance and/or evaporator coil freezing.

PRUDENCE

Ne bloquez pas l'avant de l'appareil, car cela entraînerait une restriction du débit d'air et pourrait entraîner une faible performance et/ou le gel du serpentin de l'évaporateur.

The KPAC-II will take condenser Make-up air, which cannot be ducted, from the area of placement. The inlet for the condenser Make-up air is located in the rear of the unit and will not allow for the back of the unit to be placed flat against a wall or fixed object

CAUTION

Ensure that at least 6 inches of space between the inlet and a wall or fixed object exist. If this space does not exist, it will cause decreased performance and/or a high pressure safety trip that shuts down the KPAC-II.

PRUDENCE

Assurez-vous qu'il existe au moins 6 pouces d'espace entre l'entrée et un mur ou un objet fixe. Si cet espace n'existe pas, cela entraînera une diminution des performances et/ou un déclenchement de sécurité haute pression qui arrêtera le KPAC-II.

SECTION VII - MAINTENANCE

The KPAC-II unit comes from the factory with filters installed on the evaporator inlet to prevent dust and debris from entering the system and circulating in the conditioned space. Factory-installed filters are a disposable type and must be periodically checked and replaced based on the air quality of the conditioned space.

CAUTION

Failure to maintain the filters will cause restricted air flow and can lower overall unit performance.

PRUDENCE

Le fait de ne pas entretenir les filtres entraînera un débit d'air restreint et peut réduire les performances globales de l'unité.

The air filter is located on the front of the KPAC-II unit below the control. Release the two slotted fasteners on the access door to open.

SECTION VIII - FAULT CODES

The KPAC-II System incorporates a self-diagnostic system that sounds an audible alarm, stops the system and displays a fault code (shown below) to indicate the nature of the problem on the display panel. See the troubleshooting guide later in this manual for further information:

CF = Condensate Tank Full

FP = Freeze Protection (optional)

AL = High Pressure Reset Switch Tripped

SECTION IX - KPAC II TROUBLESHOOTING GUIDE

The following troubleshooting guide provides the most common solutions for the problems which may arise. In case of problems, contact KWIKOOL at 1-800-KWIKOOL (1-800-594-5665) for assistance.

KPAC II Troubleshooting Table

FAULT	POSSIBLE CAUSE	POSSIBLE SOLUTION
Unit displays CF , Audible alarm fails to clear on start up or while operating.	Internal Condensate Tank is full.	<ul style="list-style-type: none"> Empty Internal Condensate Tank. See Section II, Installation and Assembly, Paragraph B) Unplug tank plug and reinstall to ensure good connections. System automatically resets when fault condition is corrected.
	Condensate float switch jack is not installed or not positioned correctly	
	Water level switch is engaged.	
Unit Displays AL , Audible alarm is sounding during start up or while operating.	Microprocessor board has detected high pressure. The HP Reset switch is tripped.	<ul style="list-style-type: none"> High pressure is normally caused by reduced Condenser air flow. <ul style="list-style-type: none"> Check for restriction in ducting. Check for Condenser Air system ventilation. See Section VI. Application Requirements, Paragraph C. Check condenser motors and/or blowers for proper operation. The HP Reset switch is a manual reset type. To reset, press the button, located in the condenser Make-up Air inlet on the back side of the KPAC-II, as seen by the operator. The operator should feel a click.
Audible alarm fails to clear on start up or while operating, unit displays FP . Optional.	Microprocessor has detected freezing on the evaporator coil if the system has a factory installed freeze sensor. (Special order).	Check for freezing on the evaporator coil and turn the system off to let it thaw out. System automatically resets when fault condition is corrected. Call 1-800-KWIKOOL (1-800-594-5665) if the system is not equipped with a freeze sensor.
System is ON and display is showing ON , but unit is not supplying conditioned air.	System is in time out (F or C is flashing).	Wait 2.5 minutes for the time delay to elapse. Review KPAC II manual to adjust control.
	Control is set above room temperature.	
	Control is adjusted out of operating parameters.	
	System not in the correct operational Mode.	
System is ON but the microprocessor board resets the time delay (flashing F or C) when the compressor attempts to start.	Microprocessor board detects voltage drop below operating parameters.	<ul style="list-style-type: none"> Ensure the circuit is dedicated to the operation of the KPAC-II only. Confirm the integrity of the source power. Check for proper wire size and length of power extension cable.

FAULT	POSSIBLE CAUSE	POSSIBLE SOLUTION
Power is supplied but control is blank.	Low voltage circuit is not engaged.	Check source power breaker and verify incoming power to contractor.
System trips breaker on start up.	Incoming power is incorrect.	Verify the circuit and power cable is within the systems specifications. Consult with the electrician or call 1-800-KWIKOOL (1-800-594-5665) for guidance.
	Breaker is undersized or faulty.	
	Power cable is too long and/or undersized.	
Display shows 32 and unit will not turn on cooling.	No connection of temperature sensor to Microprocessor. Temperature Sensor malfunctions.	Call 1-800-KWIKOOL (1-800-594-5665) for help.
Numeral 99 flashes on display.	Ambient room temperature is over 99 F.	Unit is working properly. Lowering of room temperature will rectify the flashing.
59 or lower temperature Flashes on display.	Ambient room temperature is less than 60 F.	Limits of unit have been reached. Operating temperatures are 65-105 F.
Supply air flow is limited, and/or water is dripping from the front of the system.	Supply or Return air is blocked or restricted, and/or the evaporator coil is freezing.	<ul style="list-style-type: none"> • Verify that Supply and Return air are not blocked and duct work is installed to specification. • Remove or add duct as needed. • Check air filter for blockage.
Evaporator coil is freezing.	Low or restricted air flow.	<ul style="list-style-type: none"> • Direct Supply and Return air to area of highest heat load. • Check for blocked air flow from the Supply air. <ul style="list-style-type: none"> • Replace air filters. • Adjust set point to allow the unit to cycle. • Add another KPAC-II system or larger capacity model. • Install service gauges to view pressures. Refer to Section V, Built-in Safeguards.
	Undersized capacity.	
	Unit constantly on.	
	Unable to achieve set point.	
	Low Return air temperature out of factory specifications.	
	Mechanical system malfunction.	
Chatter or hum is heard from the control box while the system is operating.	Incoming source power is of poor quality or low voltage component is faulty.	Check for proper incoming voltage. Remove excess or undersized power cable.

