

Portable Evaporative Cooling Unit Manual

Preface

**Thank you for choosing our
KoolBreeze Portable Evaporative Cooling Unit.**

**To ensure safe, effective, and long-term
use, please read this manual thoroughly
before operating the unit.**

P.02



P.03



P.06



P.10



Safety Precautions



Always unplug the unit before cleaning or maintenance.



- 1** Read this manual thoroughly before operating your KoolBreeze Evaporative Cooling Unit.



- 2** Do not open the control panel or unit cover without qualified technical guidance.



- 3** Avoid operating the control panel or touching the power plug or unit cover with wet hands.



- 4** Use a dedicated power outlet due to the unit's high start-up current. Only use extension cords rated 14 AWG or larger and no longer than 100 feet.



- 5** Avoid using old or damaged extension cords or outlets. Keep cords away from heat sources and ensure they are positioned to prevent tripping or accidental disconnection, which could cause injury or equipment damage.



- 6** Never remove the ground pin from the plug. Use only properly grounded outlets. Do not modify the power cord or control panel wiring for safety reasons.



- 7** This unit is not designed to be used in environments with the following:
- 1) Flammable gases (e.g., oil gas, fuel gas, pure oxygen, hydrogen).
 - 2) Flammable liquids (e.g., gasoline, toluene).
 - 3) Dust or materials with a flash point below 80°C (e.g., magnesium, platinum, gunpowder).



- 8** If the unit malfunctions, turn off the power and inspect the cord, plug, outlet, and extension cord (if used). If the issue persists after confirming these are in good condition, contact your KWIKOOL KoolBreeze distributor for service. Do not attempt repairs, as this may void the warranty.



- 9** Place the unit on a flat, level surface and engage the caster brakes during operation. Operating on an uneven surface may cause water leakage, potentially damaging flooring or nearby items.



- 10** When not using the unit for an extended period, drain the water tank using the manual drain or auto-drain function. Run the fan for 1–2 hours to dry the cooling pad, then unplug the unit for storage.



- 11** To fill the water tank manually, turn off and unplug the unit, then open the ice cube entrance to add water. Ensure all cords are safely positioned to prevent electrical hazards.



- 12** Do not position the air inlet (cooling pad side) near burning or smoking objects (e.g., matches, cigarettes, charcoal). Damage from such exposure is not covered by the warranty.



- 13** While the unit is plugged in or operating, do not open the motor cover, control panel, fan guard, or cooling pad, and do not insert objects into the fan. This could cause serious injury.



- 14** KoolBreeze units are heavy, especially when filled with water. Exercise caution when moving to prevent personal injury or damage from tipping or collisions.



- 15** Do not open the ice cube entrance while the fan is running, as it provides access to moving fan blades, which can cause serious injury or unit damage.



- 16** When cleaning, avoid spraying water on the control panel or motor to prevent damage.



- 17** Do not modify, disassemble, or repair the unit without authorization. Damage caused by unauthorized repairs is not covered by the warranty. Contact KoolBreeze for support.



- 18** Do not modify or replace the fan blades, as this may cause damage or injury.

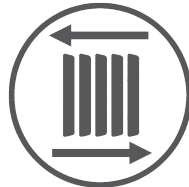


- 19** Do not move the unit by pulling the water fill hose, as this may cause damage not covered by the warranty.

Performance and Specifications



Variable Speed:
Adjust airflow using the fan speed dial on the control panel.



Oscillating Louvers:
Available on some models to expand cooling coverage by directing airflow side to side.



Low Water Safety:
Protects the pump from damage when water levels are low.



Large Water Tank:
Supports up to 6 hours of operation without refilling.



Air Filtration:
Filters dust while cooling for cleaner air.



Ice Cooling:
Add ice through the ice door to enhance cooling.



Portability:
Equipped with easy-roll casters and handles for mobility.



Durable Frame:
High-strength polyethylene structure ensures durability.



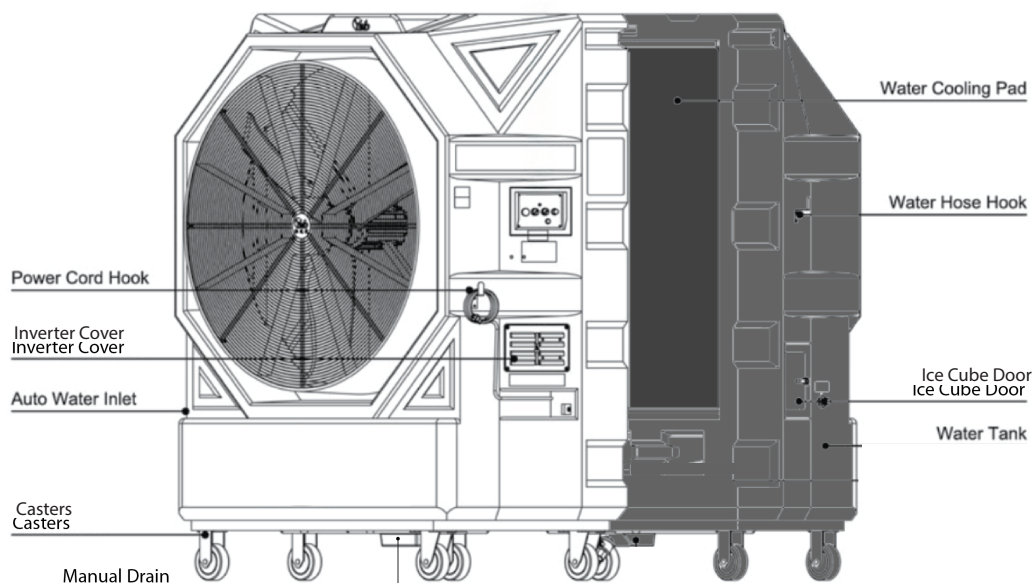
Dual Modes:
Operates as a fan only or with no-mist evaporative cooling.



Protective Cover:
Koolbreeze units come with a canvas protective cover to keep clean and protects the unit when not in use.

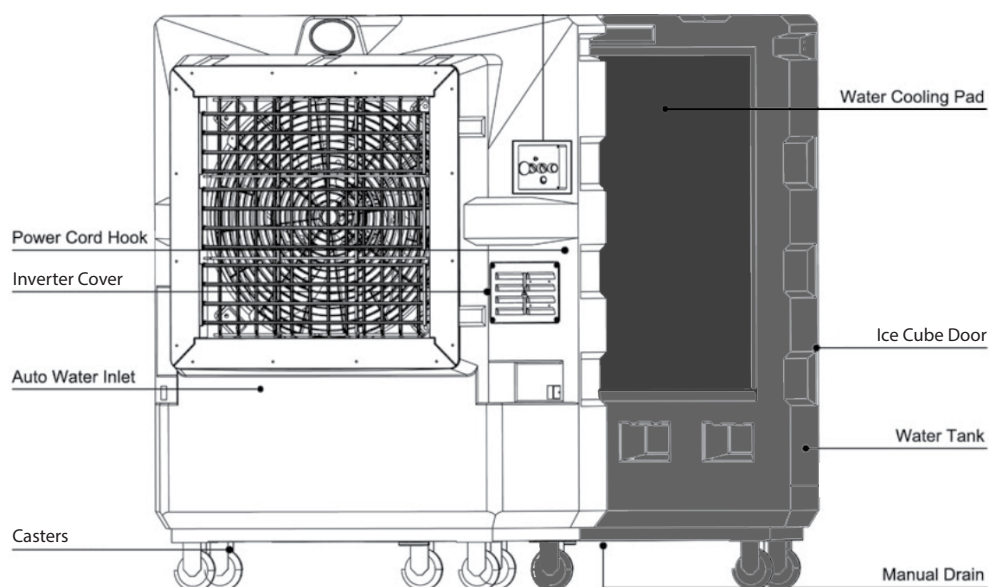
Performance & Specifications

KB280X2



Model	KB130X1	KB190X2	KB280X2
External Frame	Polyethylene	Polyethylene	Polyethylene
Blades	30" 3 Nylon 6 + Fiberglass	42" 6 Nylon 6 + Fiberglass	50" 3 SMC Fiberglass
Motor	0.5HP, F Grade	1.5HP, F Grade	2HP, F Grade
Pole	6P	10P	10P
Airflow (CFM)	10,950	18,000	26,000
Max. Rotating Speed	1000 RPM	580 RPM	660 RPM
Max. Sound Level	65 dB	70 dB	75 dB
Voltage	1-Phase 110V, 50/60 Hz	1-Phase 220V, 50/60 Hz	1-Phase 220V, 50/60 Hz
Max. Current	10 A \pm 10%	7.6 A \pm 10%	7.6 A \pm 10%
Max. Power Consumption	740 W/hr \pm 10%	800 W/hr \pm 10%	1085 W/hr \pm 10%
Max. Air Distance	65.6 ft (25 m)	82 ft (25 m)	98.4 ft (30 m)
Size (W x H x D)	49" x 63" x 28"	61" x 73" x 32"	71" x 79" x 35"
Water Storage	38.3 gal (145 L)	47.6 gal (180 L)	60.8 gal (230 L)
Weight	198 lb (120 kg)	265 lb (120 kg)	353 lb (160 kg)
Total Weight (Full)	518 lb (300 kg)	661 lb (300 kg)	860 lb (390 kg)




Performance & Specifications



Model	KB80L1	KB105L1	KB145L1
External Frame	Polyethylene	Polyethylene	Polyethylene
Blades	18" 3 Nylon 6 + Fiberglass	24" 3 Nylon 6 + Fiberglass	30" 3 Nylon 6 + Fiberglass
Motor	0.33HP, F Grade	0.5HP, F Grade	0.5HP, F Grade
Pole	4P	6P	6P
Airflow (CFM)	4,900	7,250	12,725
Max. Rotating Speed	1380 RPM	1100 RPM	1100 RPM
Max. Sound Level	55 dB	60 dB	60 dB
Voltage	1-Phase 110V, 60 Hz	1-Phase 110V, 50/60 Hz	1-Phase 110V, 50/60 Hz
Max. Current	6.1 A \pm 10%	8.5 A \pm 10%	12 A \pm 10%
Max. Power Consumption	420 W/hr \pm 10%	630 W/hr \pm 10%	695 W/hr \pm 10%
Max. Air Distance	49.2 ft (15 m)	49.2 ft (15 m)	65.6 ft (30 m)
Size (W x H x D)	29" x 53" x 20"	39" x 56" x 28"	52" x 68" x 27"
Water Storage	15.9 gal (60 L)	31.7 gal (120 L)	44.9 gal (170 L)
Weight	99.2 lb (45 kg)	165 lb (75 kg)	220 lb (100 kg)
Total Weight (Full)	231 lb (105 kg)	430 lb (195 kg)	595 lb (270 kg)

Operating Instructions

1 Please follow the conditions below:

- A  Connect the unit to a single-phase AC 110V or 220V, 50/60 Hz power source, as indicated by the voltage label on the product.
- B  Ensure the power voltage is within $\pm 10\%$ of the specified voltage.
- C  Operate the unit in temperatures between 32°F and 113°F (0°C and 45°C). Avoid placing near heat sources or open flames.

- 2 If the water level is low, the pump will stop automatically. Fill the tank to the maximum level indicated on the water storage scale, but do not overfill.
- 3 Do not stand, sit, or place objects on the unit, as this may cause damage, tipping, or injury.
- 4 Secure the ice cube entrance latch after use.
- 5 Read instructions on back baffle for proper installation.

- 6 Do not remove the fan guard or other components, as this may cause damage or injury.
- 7 Use a dedicated power outlet or cord. Avoid sharing with other high-power devices to prevent current overload or overheating of cords.
- 8 To use fan-only mode or for drying media, turn off the pump switch.

9 For optimal cooling, clean the cooling pad and change the tank water weekly. Use the manual drain at the bottom and refill after cleaning to extend pump life.



A. Attention! Before the cleaning process, please switch off the fan, unplug, and move the fan away from power source and other equipment.



B. Open the manual drain below, and wash the cooling pad with soft brush from the top. After washing, wait until the waste water drains away, then close the drain.



C. When washing the cooling pad, do not spray water directly to the control panel or the cover of the inverter. This will damage the motor controller.



D. Wipe the fan housing with wet towel, do not spray water or wipe it with volatile liquid.

10 Product damages cause by the following issues are not covered by our warranty.

- A. Connecting to incorrect voltage.
- B. Mishandling or transit damage caused by users.
- C. Natural Disasters.
- D. Exposure to volatile liquids or gases.
- E. Accidents due to improper wiring or power sharing.
- F. Unauthorized modifications or part replacements.
- G. Malfunctions from altered wiring.
- H. Water damage from spraying or rain.
- I. Pump damage due to clogging from neglected cleaning.



Contact KoolBreeze for any questions or support.

Feature and Manual



Stepless Fan Speed Control



Short-Circuit Protection



Soft Start Motor



Low Water Level Protection



Over-Current Protection

Operating Instructions








1 Operation Process and Auto Water Inlet:

- Connect the water inlet hose's quick connector to a faucet and secure it. Ensure the other end is fastened to the unit.
- Open the faucet to fill the tank to the maximum level on the water storage scale.
- Turn on the pump switch and allow the cooling pad to wet for 1–2 minutes.
- Turn on the fan and adjust the speed for optimal cooling.

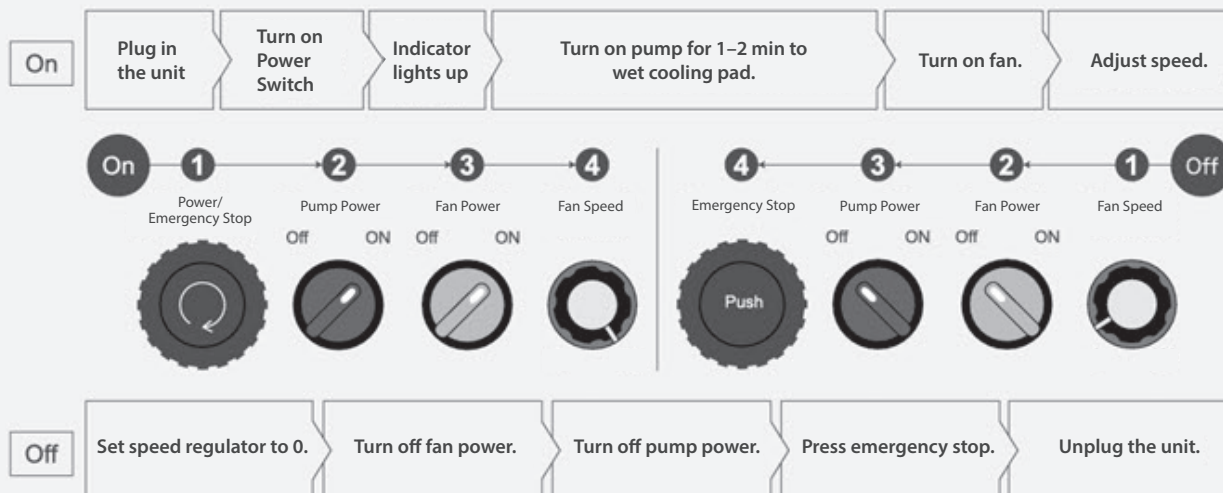
2 Control Panel Instruction:



Operating Instructions

A		Power/ Emergency Stop	<ul style="list-style-type: none"> Twist to turn on (lights up power indicator). Press to stop in emergencies. Wait 20 seconds before restarting.
B		Pump Power	<ul style="list-style-type: none"> Activates pump when water level is sufficient. Pump will not start if water is too low.
C		Fan Power	<ul style="list-style-type: none"> Activates fan. Use with fan speed regulator to control speed.
D		Fan Speed	<ul style="list-style-type: none"> Adjusts fan speed when fan power is on.
E		Shutter Power	<ul style="list-style-type: none"> Shutter Power (select models) Controls electric shutters on KB145L1, KB105L1, and KB80L1.

Turn On & Turn Off:



Operating Instructions

Feature and Manual



Label Instructions Sign

1 ϕ AC110V

Power Specification

1 ϕ AC220V

Power Specification



WARNING / DANGEROUS



**ELECTRIC SHOCK
OPERATE CAREFULLY**



DON'T SPRAY WATER

- ⚠ Inverter and controller of the fan is installed here. Do not spray water on the inverter or control panel. Wipe with a damp cloth to avoid electrical hazards.

ATTENTION:

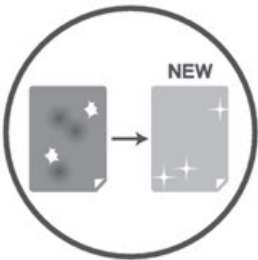
Always turn off and unplug the unit and move it away from power sources before cleaning.

Cleaning and Maintenance



Regular Water Changes

- ❶ Dust and particles in the tank can reduce cooling efficiency and cause odors. Change the water at least weekly, or more often in dusty environments.
- ❷ In areas with poor air quality, drain the tank after use via the manual drain and refill before the next use.
- ❸ **Manual Drain:**
 - Located at the bottom of the unit. Twist the knob to drain water, then close it after draining.



Note: Cooling pads are consumable. Contact KoolBreeze or your distributor for replacements if stained or damaged.



Diversity Industries D.B.A.

KWIKOOL Portable Cooling Systems

10404 Mula Rd Stafford, Tx 77477

1-800-KWIKOOL (594-5665)

sales@kwikool.com

